



Dealing with Screen captures (in Photoshop)

© 2006 David Creamer

I.D.E.A.S.

Publishing Consultant & Trainer

Authorized Adobe Training Provider for
Photoshop, Illustrator, Acrobat, InDesign, FrameMaker, PageMaker, GoLive, and Premiere
Adobe Creative Suite Master, Adobe Print Specialist, Adobe Web Specialist

Authorized Quark Trainer

Authorized FileMaker Trainer

Authorized Markzware FlightCheck Trainer

Authorized Enfocus Trainer (PitStop Pro/Server)

Authorized Microsoft Publisher Service Provider

www.IDEAStraining.com

Specializing in custom classroom and on-site training.

Processing Screen Captures

Suggested Screen-Capture Software

Windows: Snag It

Macintosh: Snapz Pro

Note: both are shareware programs and require a small fee for continued usage.

Converting Color Mode for Web-Based PDFs or Color Laser Printing

There is no need to convert RGB screen captures for web-based PDFs, however, you should read the **File Format** section at the end of this report.

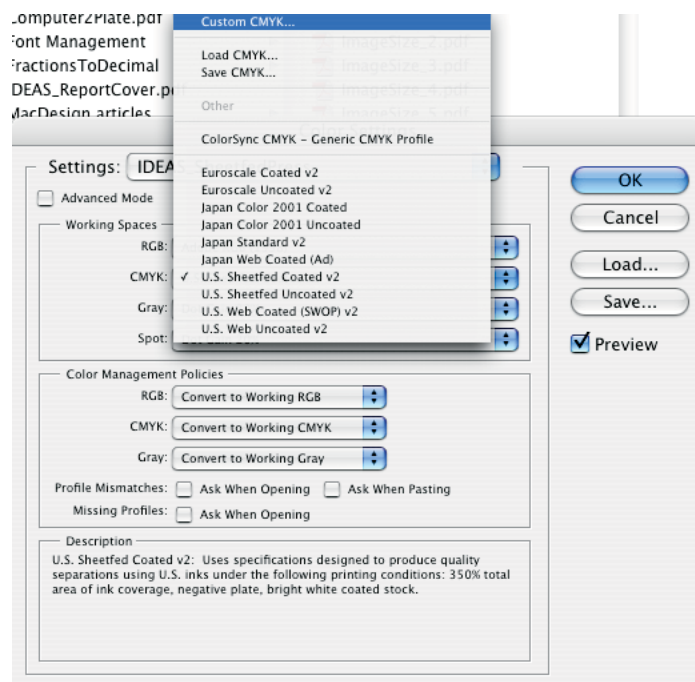
Converting Color Mode Commercial Printing

When you convert from RGB (Red, Green, Blue) to CMYK (Cyan, Magenta, Yellow, and Black), Photoshop uses the current CMYK workspace settings to convert the file. If you use the default Photoshop CMYK conversion settings, SWOP, the colors are “spread” between all four CMYK colors. While this may be appropriate for photographs, it will make the text appear blurry when printed. To solve this, you may want to create a special CMYK separation setting that will create a much stronger black separation.

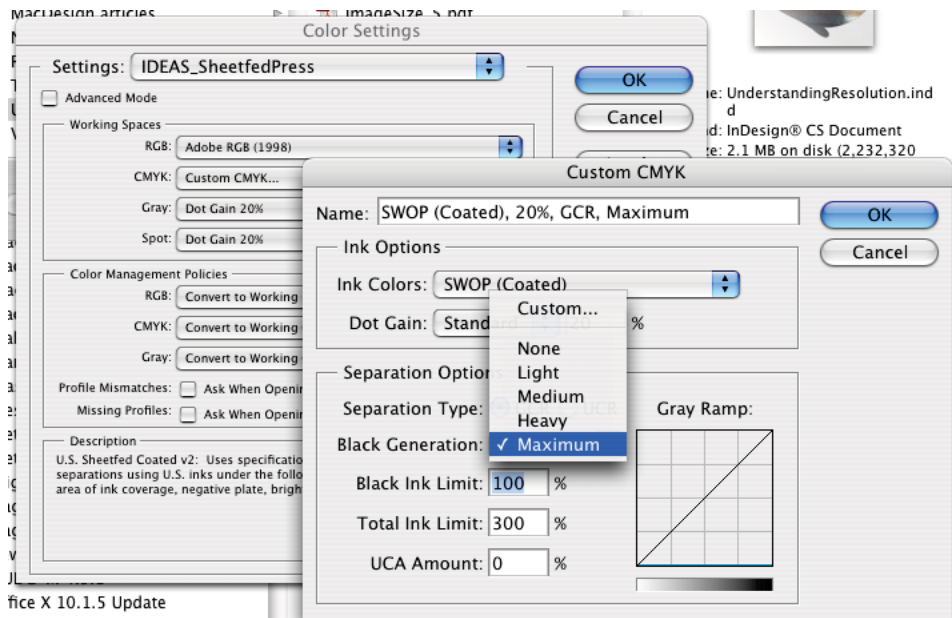
Creating a Maximum Black CMYK Setting

First, set your color settings to U.S. Prepress Defaults to get a good starting point.

Then, click on the CMYK settings and go up to the Custom CMYK menu:

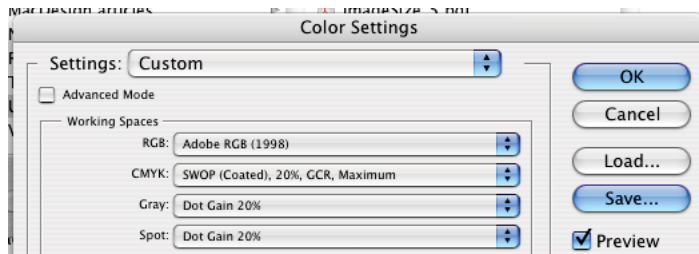


When the next dialog box comes, set the Black Generation to *Maximum*:

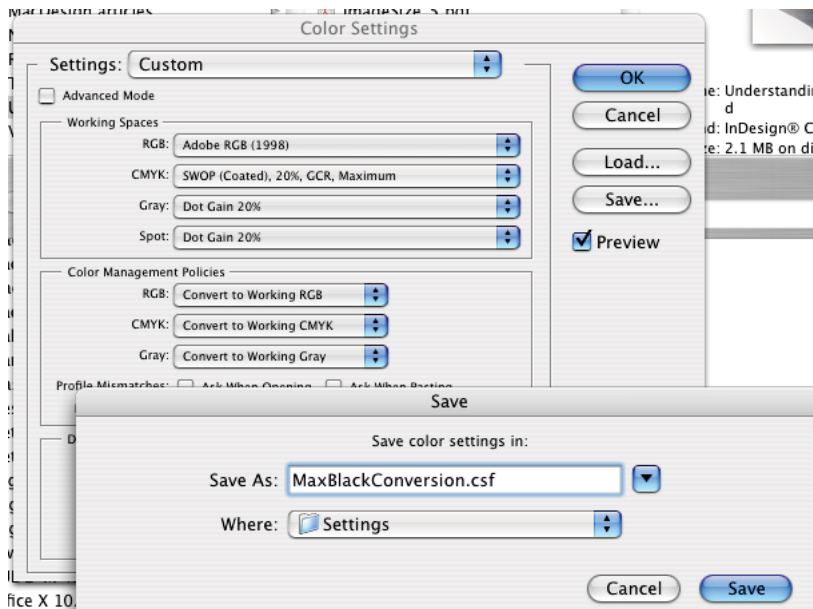


Make any other changes as necessary, and click OK to dismiss the dialog box.

Back at the Color Settings dialog box, click the Save button:



Give the settings a name:

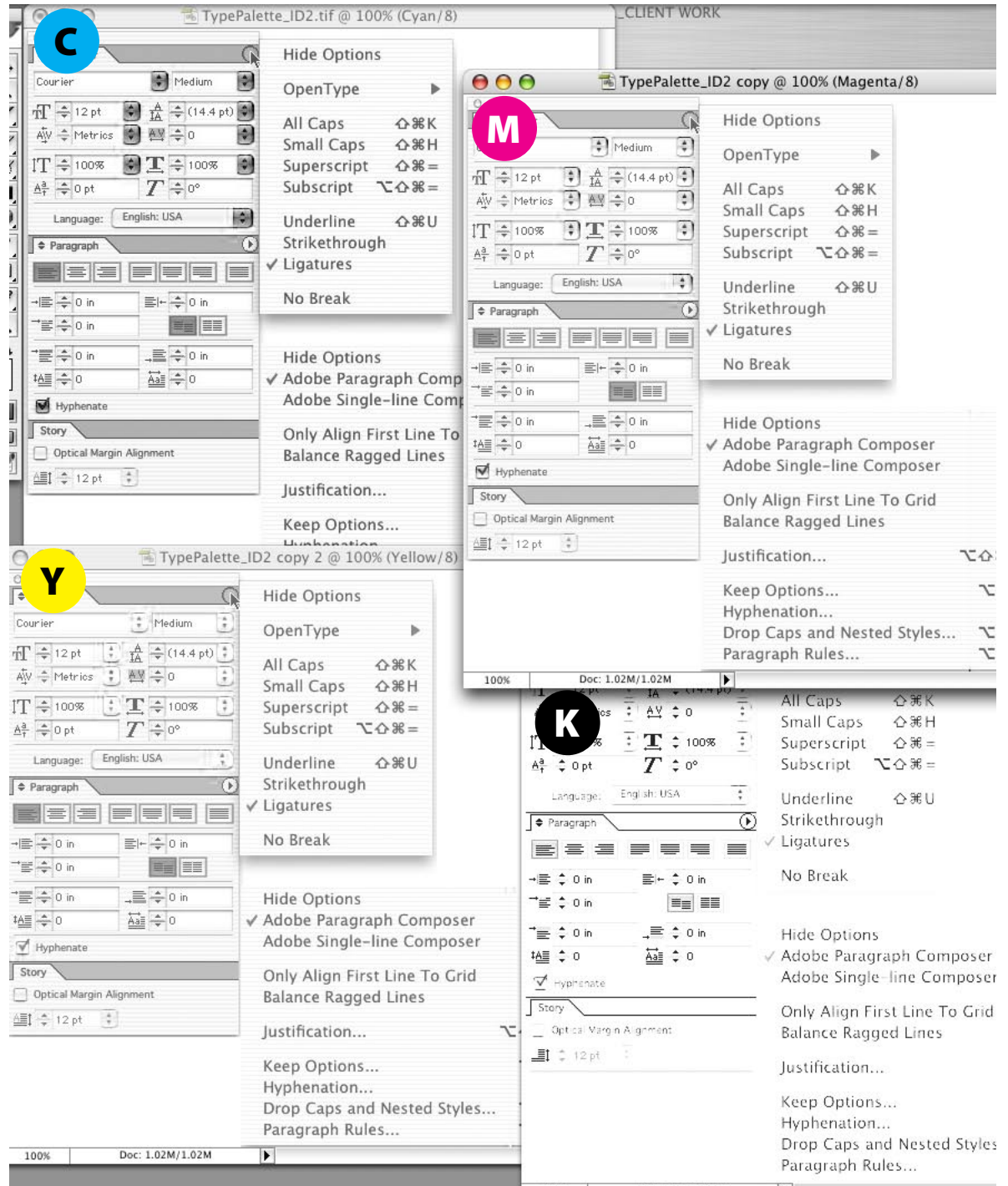


Using Settings

Be sure to change your color settings to the maximum black setting *before* you convert from RGB to CMYK (and be sure to change them back when you are done).

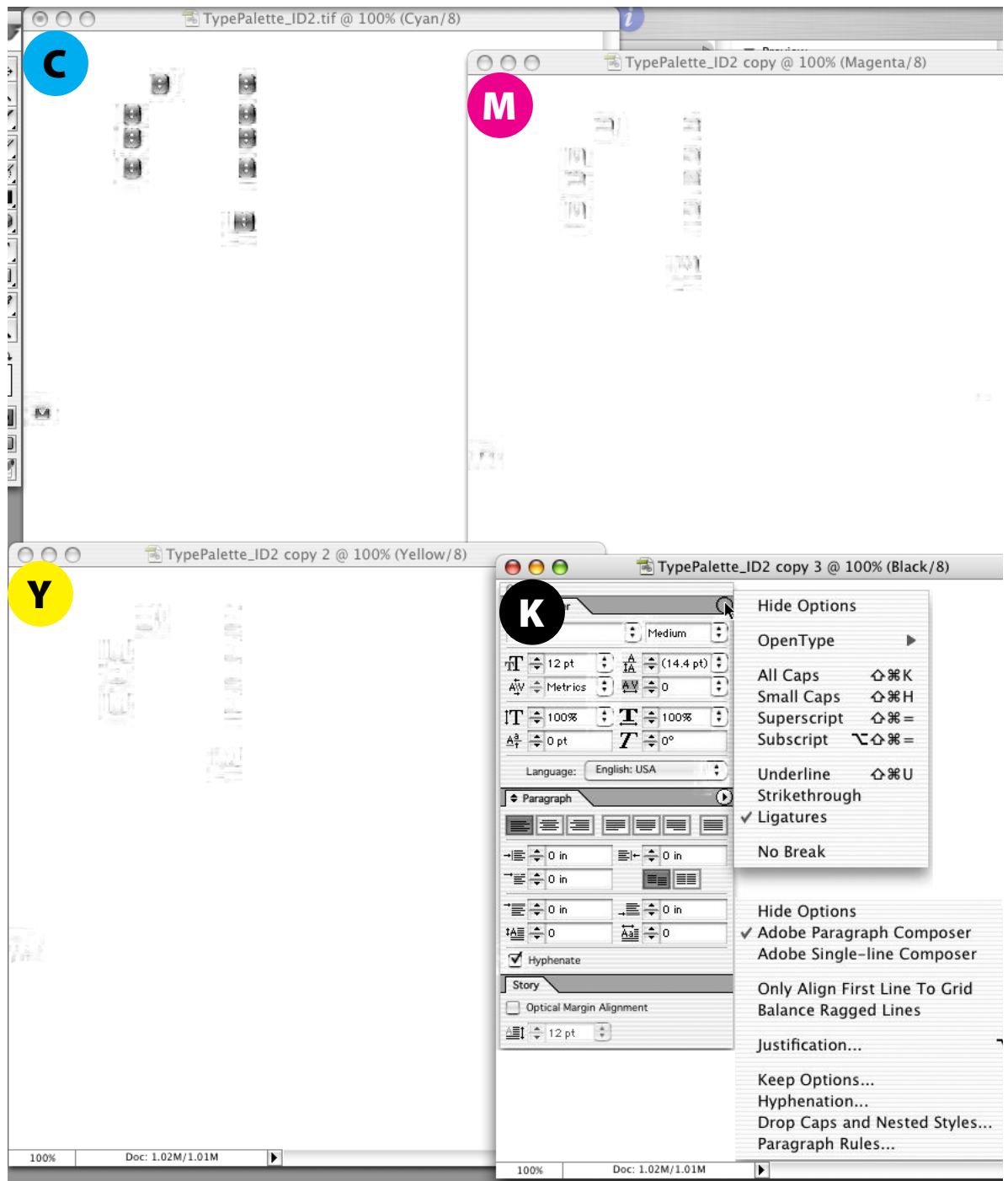
Separations Examples

Below is a separation example using the standard SWOP settings:



Notice how the Black text is made up all four colors.

Below is a separation example using the Maximum Black settings:



Notice how the Black text is made up of only black. This will result in a cleaner reproduction.

Resizing Screen Captures

When placing screen captures, they are best run at 100% or even divisions, 50%, 25%; if possible, do not enlarge captures. If you use odd reduction size, the type could become blurry, however, one should always run a test to see if the results are very noticeable.

File Format

For Commercial Printing

If printing directly from the layout program, save the files as TIFF (LZW compression is OK), PDF, or PSD (if supported by the publishing application). Do not use JPEG.

HOWEVER, if you plan on making a PDF of the final product to send to the printer, do not use Automatic compression on the images — use 8-bit Zip compression. Use of the Automatic setting will trigger JPEG compression on these images since the above formats contain more than 256 colors. Another option is to save the captures as GIF files if the page-layout software will support their separation (see below).

For Web-Based PDFs

Save the files as GIF or PNG-8. That way, you can use the Automatic setting for compressing your images. These formats do not have more than 256 colors, so they will not trigger the JPEG compression. If, in the rare case, your images do need millions of colors for your screen captures, use PNG-24, PDF, or PSD, but use only Zip compression.